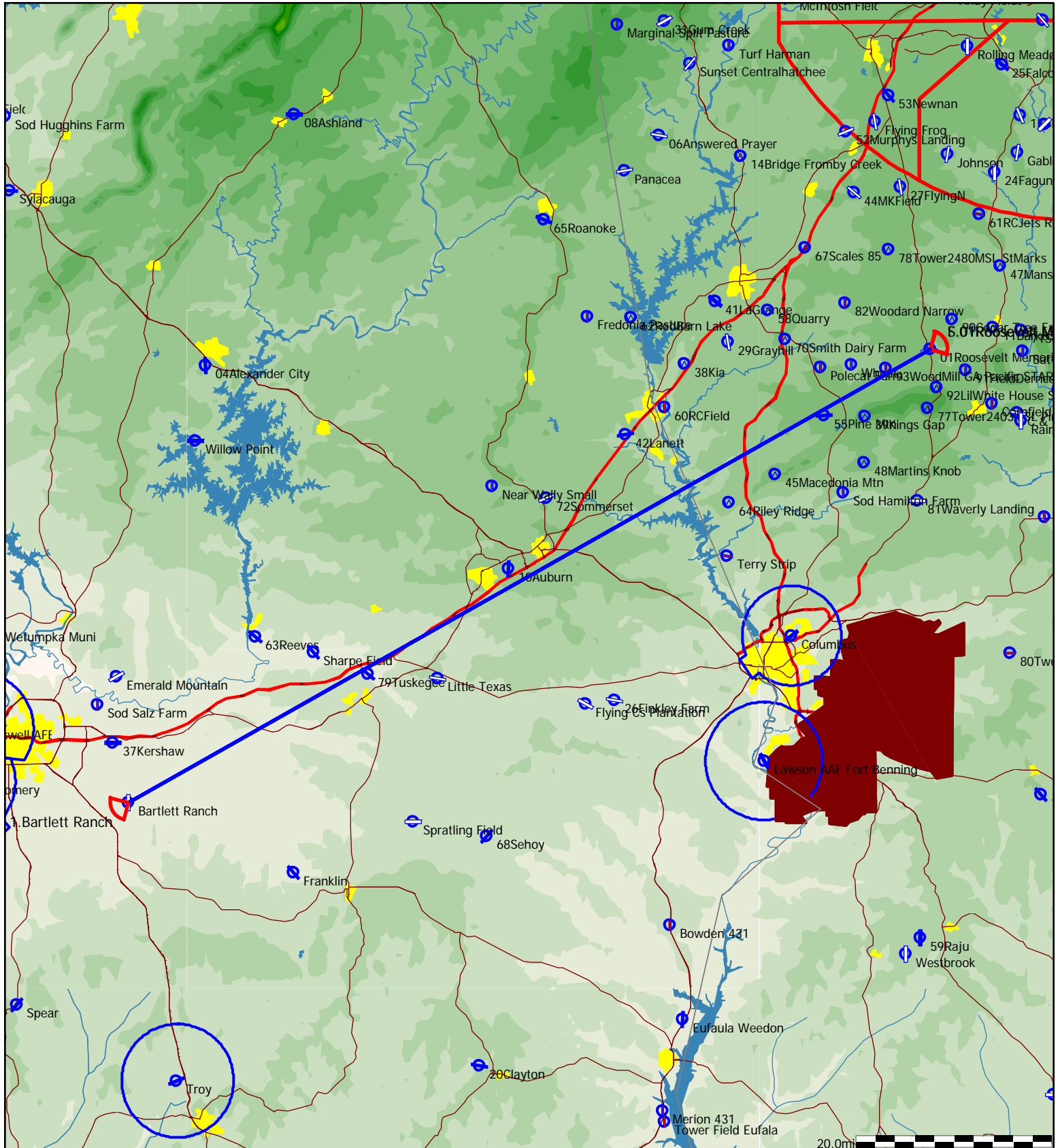


Type: Out and return [302.2pts]

Warm Springs 300km Out & Returns

Task distance: 187.8mi

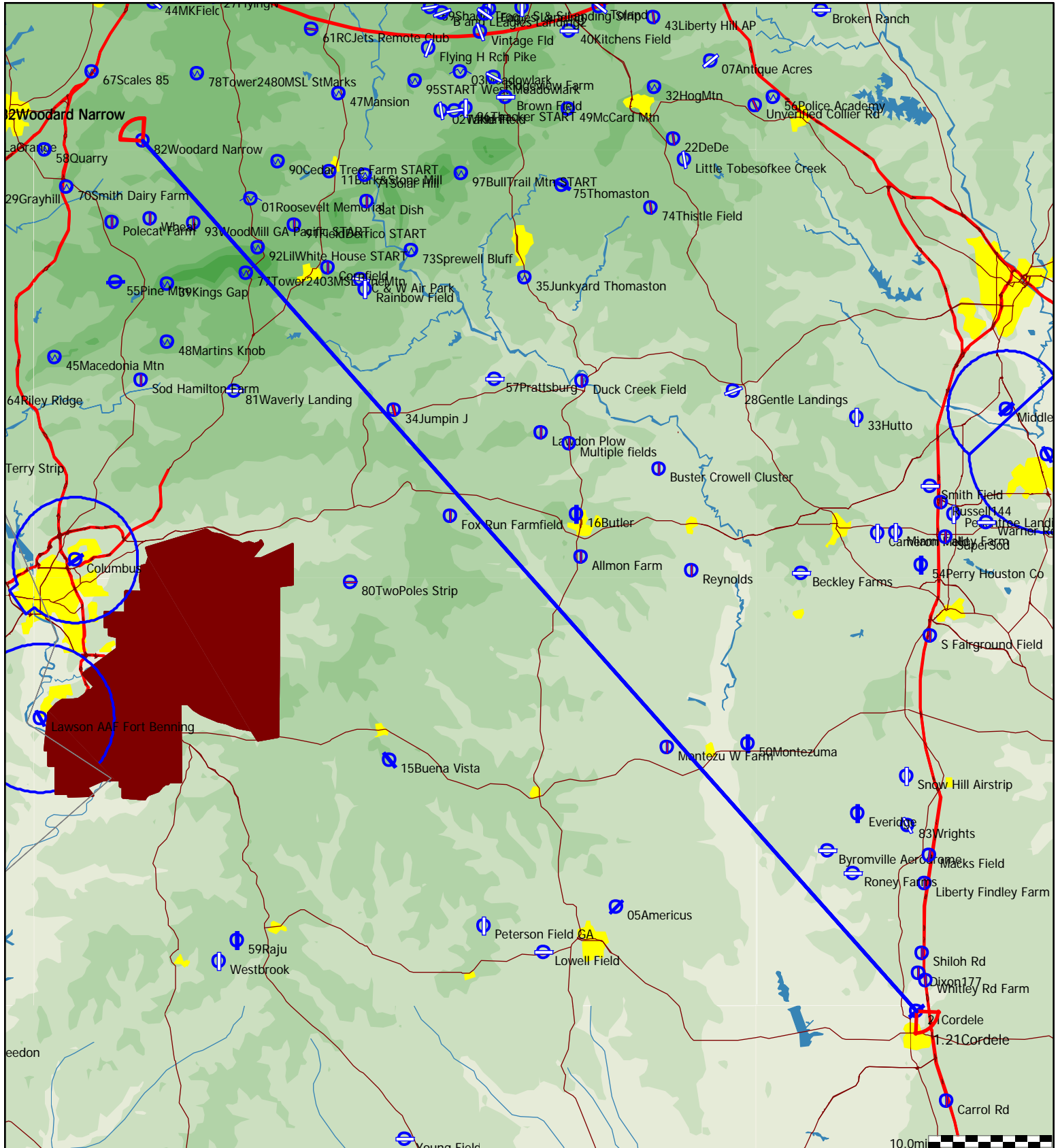
Style	Code	Points	Latitude	Longitude	Dis.	Crs.
Take off	01Rosevl	01Roosevelt Memorial	N32°56'19"	W084°41'47"		
Start	01Rosevl	01Roosevelt Memorial	N32°56'19"	W084°41'47"		
1.Point	Bartlett	Bartlett Ranch	N32°16'11"	W086°05'56"	93.9mi	241°
Finish	01Rosevl	01Roosevelt Memorial	N32°56'19"	W084°41'47"	93.9mi	60°
Landing	01Rosevl	01Roosevelt Memorial	N32°56'19"	W084°41'47"		



Type: Out and return [302.6pts]

Task distance: 188.0mi

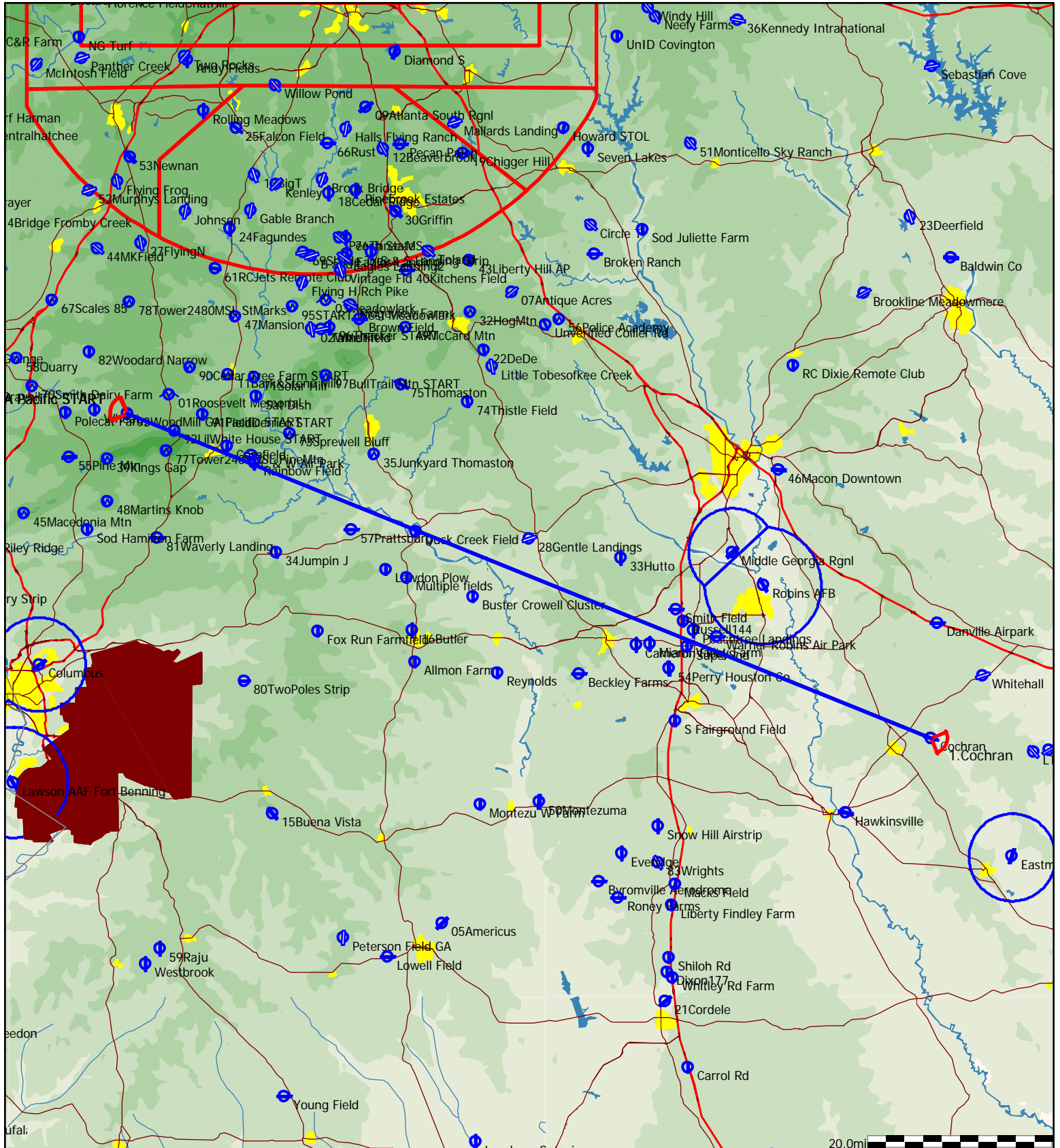
Style	Code	Points	Latitude	Longitude	Dis.	Crs.
Take off	01Rosevl	01Roosevelt Memorial	N32°56'19"	W084°41'47"		
Start	82WodNar	82Woodard Narrow	N33°00'24"	W084°50'45"		
1.Point	21Cordel	21Cordele	N31°59'20"	W083°46'26"	94.0mi	138°
Finish	82WodNar	82Woodard Narrow	N33°00'24"	W084°50'45"	94.0mi	319°
Landing	01Rosevl	01Roosevelt Memorial	N32°56'19"	W084°41'47"		



Type: Out and return [302.7pts]

Task distance: 188.1mi

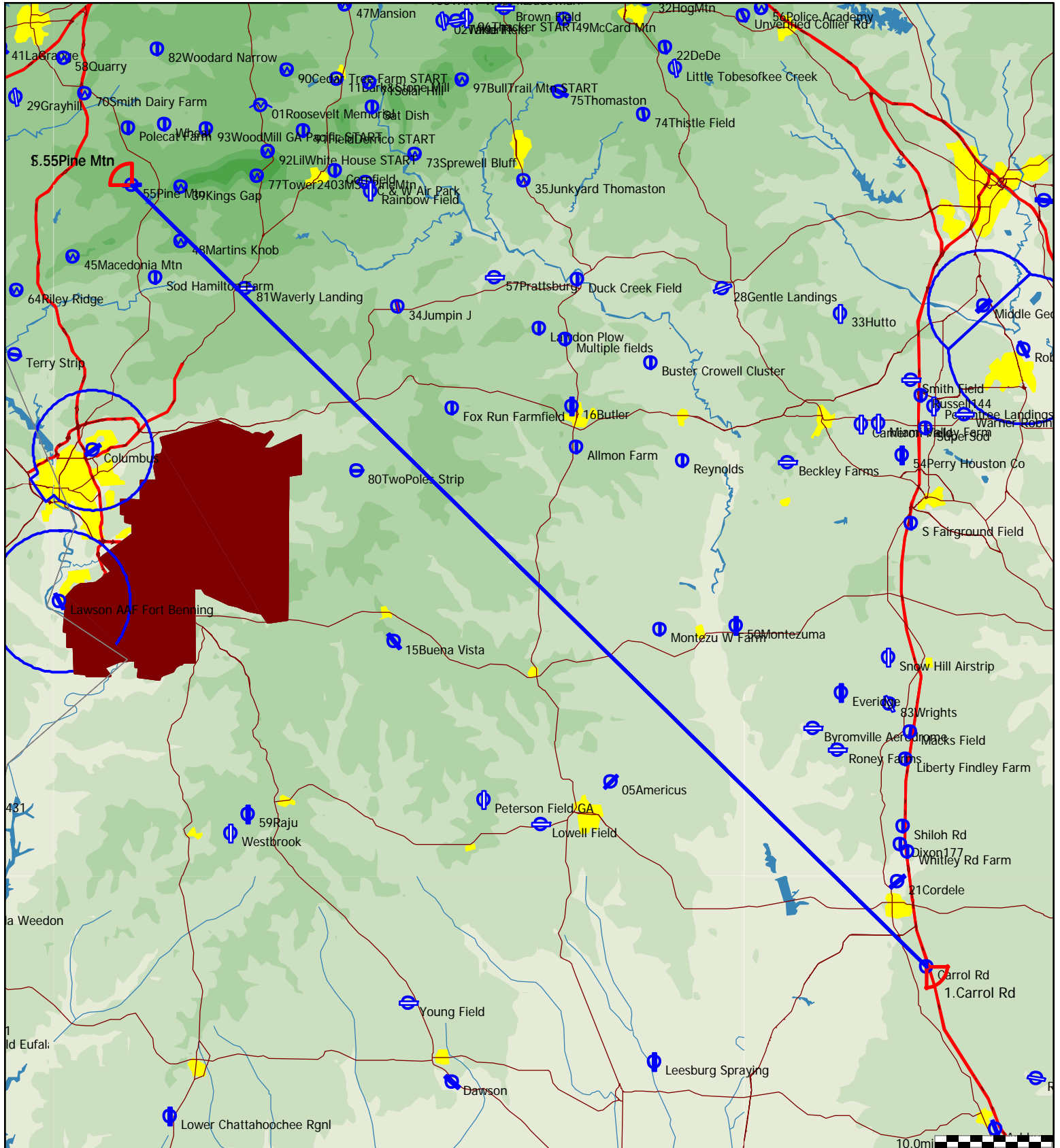
Style	Code	Points	Latitude	Longitude	Dis.	Crs.
Take off	01Rosevl	01Roosevelt Memorial	N32°56'19"	W084°41'47"		
Start	90WodMST	93WoodMill GA Pacific START	N32°54'35"	W084°46'30"		
1.Point	Cochran	Cochran	N32°24'02"	W083°16'42"	94.0mi	112°
Finish	90WodMST	93WoodMill GA Pacific START	N32°54'35"	W084°46'30"	94.0mi	292°
Landing	01Rosevl	01Roosevelt Memorial	N32°56'19"	W084°41'47"		



Type: Out and return [303.1pts]

Task distance: 188.4mi

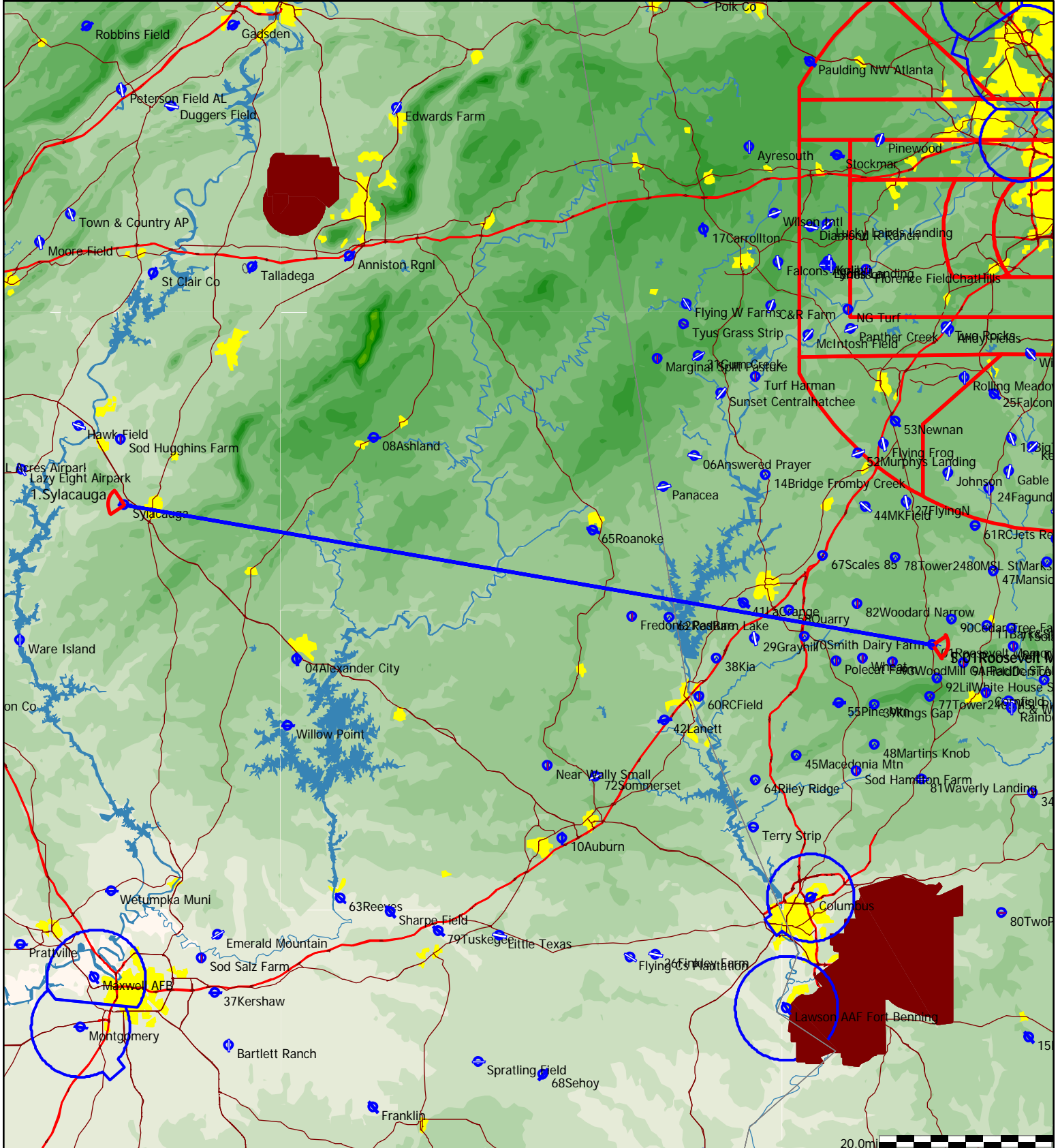
Style	Code	Points	Latitude	Longitude	Dis.	Crs.
Take off	01Rosevl	01Roosevelt Memorial	N32°56'19"	W084°41'47"		
Start	55PineMt	55Pine Mtn	N32°50'27"	W084°52'57"		
1.Point	CARROLRd	Carrol Rd	N31°53'04"	W083°43'55"	94.2mi	134°
Finish	55PineMt	55Pine Mtn	N32°50'27"	W084°52'57"	94.2mi	315°
Landing	01Rosevl	01Roosevelt Memorial	N32°56'19"	W084°41'47"		



Type: Out and return [305.Opts]

Task distance: 189.5mi

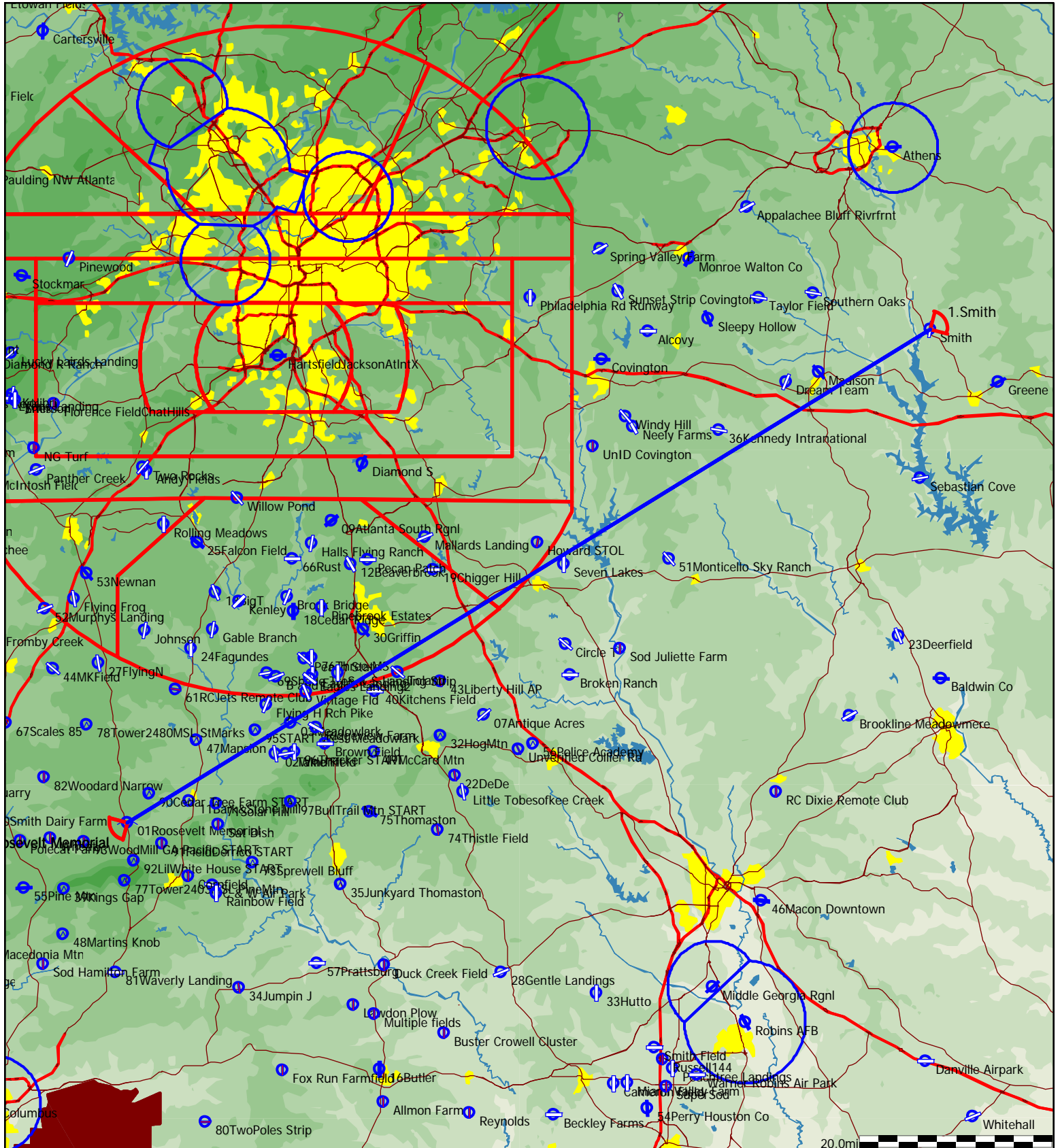
Style	Code	Points	Latitude	Longitude	Dis.	Crs.
Take off	01Rosevl	01Roosevelt Memorial	N32°56'19"	W084°41'47"		
Start	01Rosevl	01Roosevelt Memorial	N32°56'19"	W084°41'47"		
1.Point	Sylacaug	Sylacauga	N33°10'19"	W086°18'20"	94.8mi	280°
Finish	01Rosevl	01Roosevelt Memorial	N32°56'19"	W084°41'47"	94.8mi	99°
Landing	01Rosevl	01Roosevelt Memorial	N32°56'19"	W084°41'47"		



Type: Out and return [313.7pts]

Task distance: 194.9mi

Style	Code	Points	Latitude	Longitude	Dis.	Crs.
Take off	01Rosevl	01Roosevelt Memorial	N32°56'19"	W084°41'47"		
Start	01Rosevl	01Roosevelt Memorial	N32°56'19"	W084°41'47"		
1.Point	Smith	Smith	N33°40'34"	W083°15'34"	97.5mi	58°
Finish	01Rosevl	01Roosevelt Memorial	N32°56'19"	W084°41'47"	97.5mi	239°
Landing	01Rosevl	01Roosevelt Memorial	N32°56'19"	W084°41'47"		

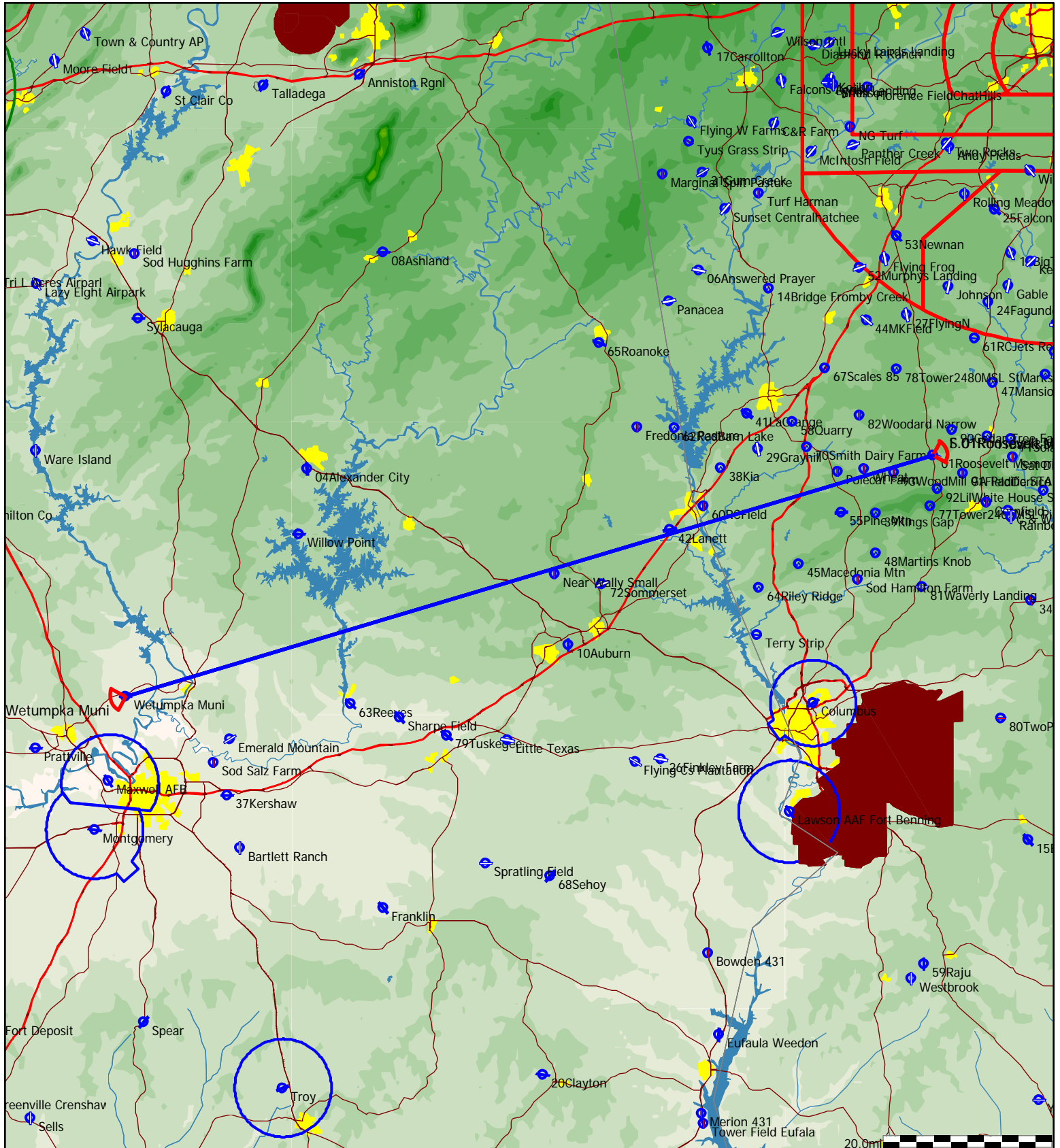


Type: Out and return [319.8pts]

HC.94=319.2

Task distance: 198.7mi

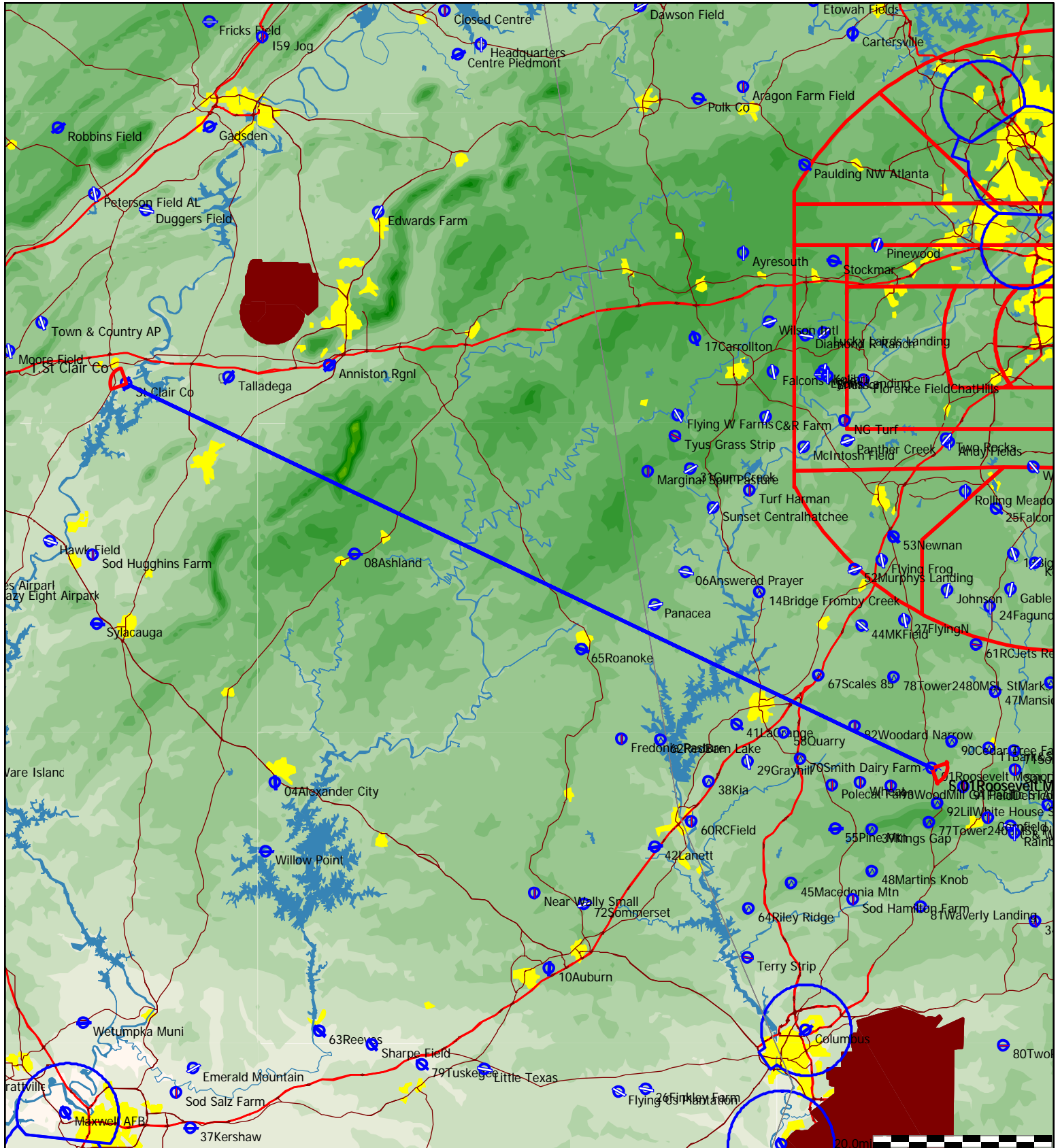
Style	Code	Points	Latitude	Longitude	Dis.	Crs.
Take off	01Rosevl	01Roosevelt Memorial	N32°56'19"	W084°41'47"		
Start	01Rosevl	01Roosevelt Memorial	N32°56'19"	W084°41'47"		
1.Point	Wetumpka	Wetumpka Muni	N32°31'38"	W086°19'52"	99.3mi	254°
Finish	01Rosevl	01Roosevelt Memorial	N32°56'19"	W084°41'47"	99.3mi	73°
Landing	01Rosevl	01Roosevelt Memorial	N32°56'19"	W084°41'47"		



Type: Out and return [320.4pts]

Task distance: 199.1mi

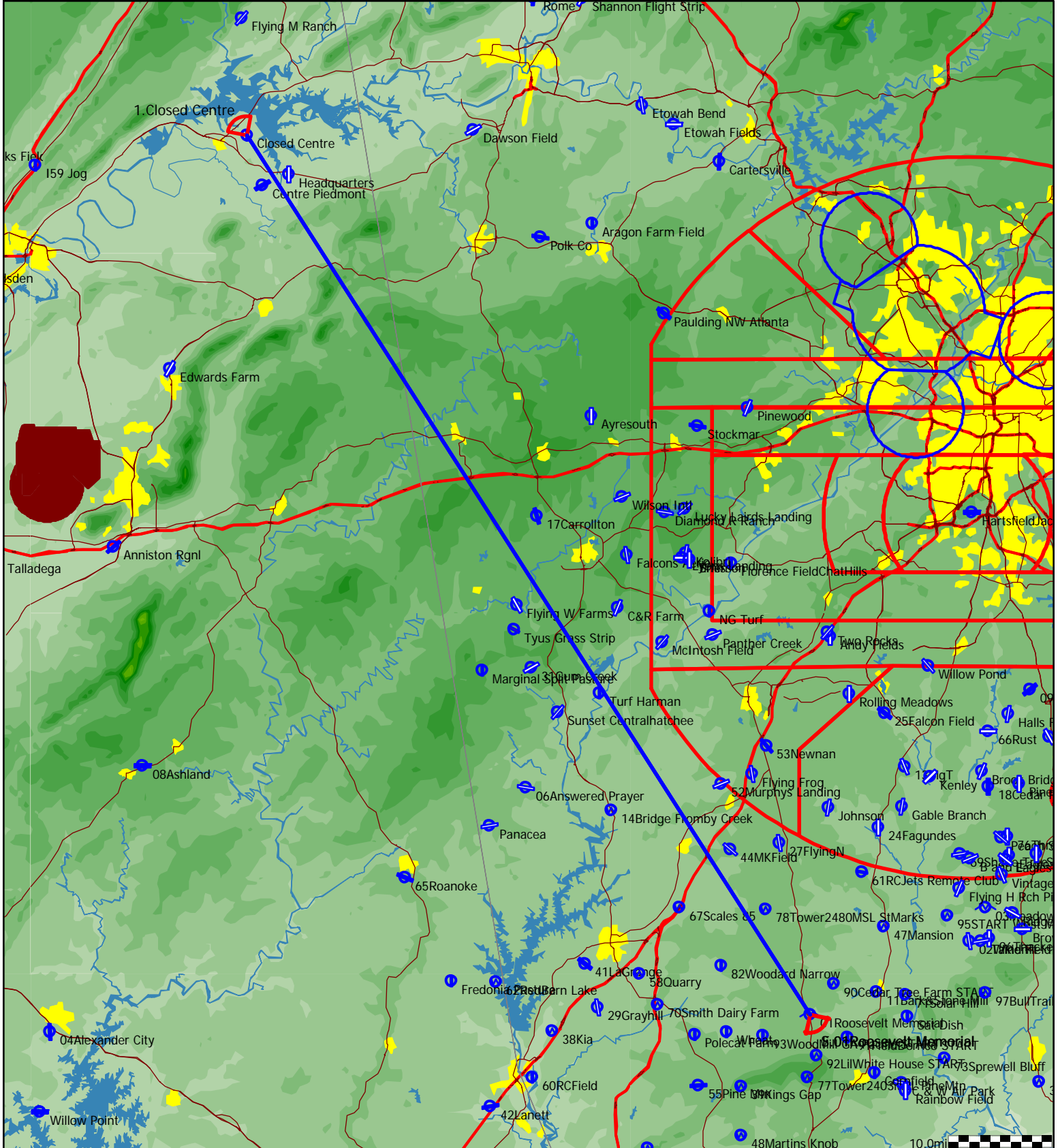
Style	Code	Points	Latitude	Longitude	Dis.	Crs.
Take off	01Rosevl	01Roosevelt Memorial	N32°56'19"	W084°41'47"		
Start	01Rosevl	01Roosevelt Memorial	N32°56'19"	W084°41'47"		
1.Point	StClair	St Clair Co	N33°33'32"	W086°14'57"	99.6mi	296°
Finish	01Rosevl	01Roosevelt Memorial	N32°56'19"	W084°41'47"	99.6mi	115°
Landing	01Rosevl	01Roosevelt Memorial	N32°56'19"	W084°41'47"		



Type: Out and return [322.2pts]

Task distance: 200.2mi

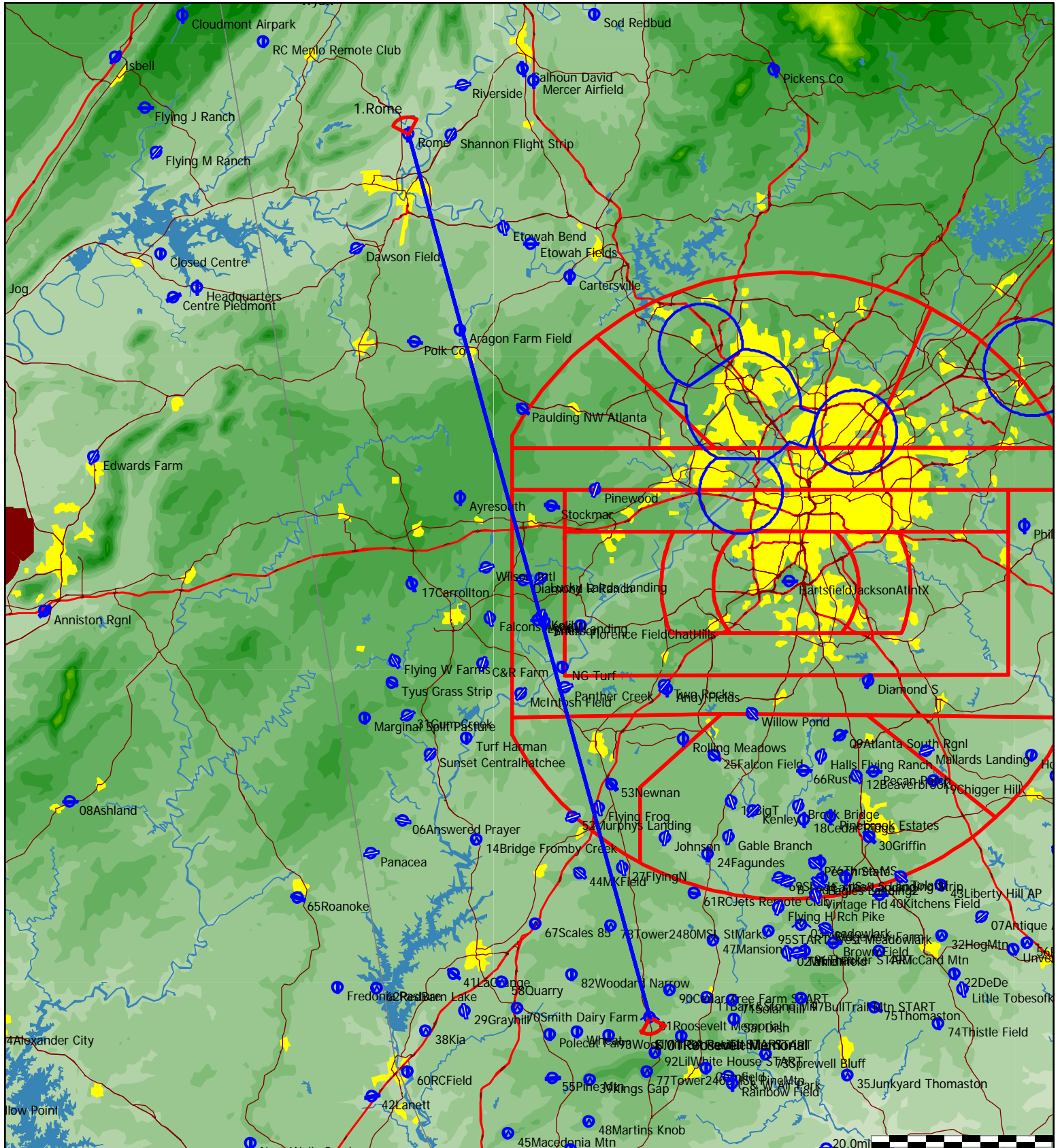
Style	Code	Points	Latitude	Longitude	Dis.	Crs.
Take off	01Rosevl	01Roosevelt Memorial	N32°56'19"	W084°41'47"		
Start	01Rosevl	01Roosevelt Memorial	N32°56'19"	W084°41'47"		
1.Point	CLSDCNTR	Closed Centre	N34°09'36"	W085°38'06"	100.1mi	327°
Finish	01Rosevl	01Roosevelt Memorial	N32°56'19"	W084°41'47"	100.1mi	147°
Landing	01Rosevl	01Roosevelt Memorial	N32°56'19"	W084°41'47"		



Type: Out and return [324.8pts]

Task distance: 201.8mi

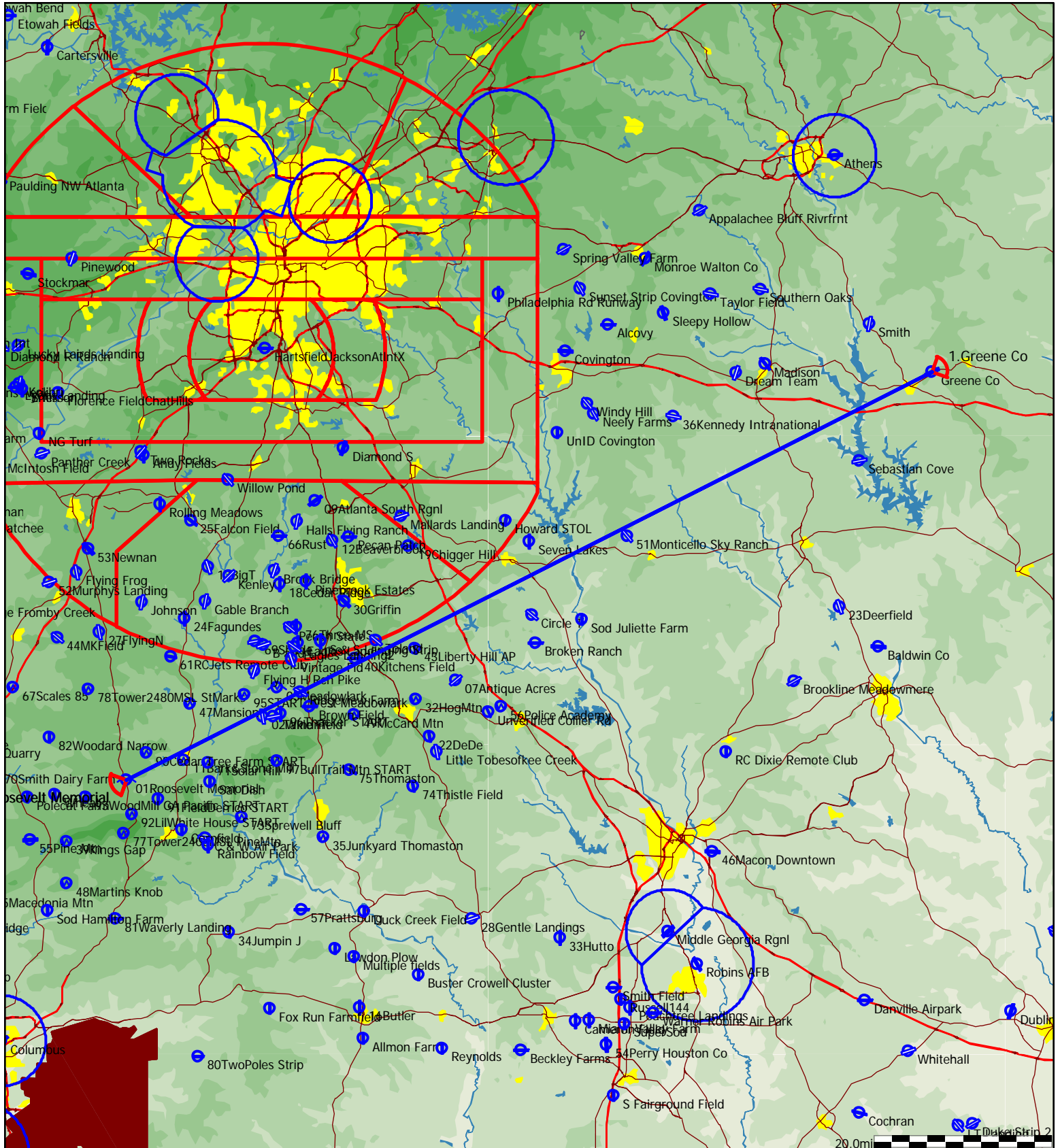
Style	Code	Points	Latitude	Longitude	Dis.	Crs.
Take off	01Rosevl	01Roosevelt Memorial	N32°56'19"	W084°41'47"		
Start	01Rosevl	01Roosevelt Memorial	N32°56'19"	W084°41'47"		
1.Point	Rome	Rome	N34°21'03"	W085°09'31"	100.9mi	345°
Finish	01Rosevl	01Roosevelt Memorial	N32°56'19"	W084°41'47"	100.9mi	165°
Landing	01Rosevl	01Roosevelt Memorial	N32°56'19"	W084°41'47"		



Type: Out and return [325.1pts]

Task distance: 202.0mi

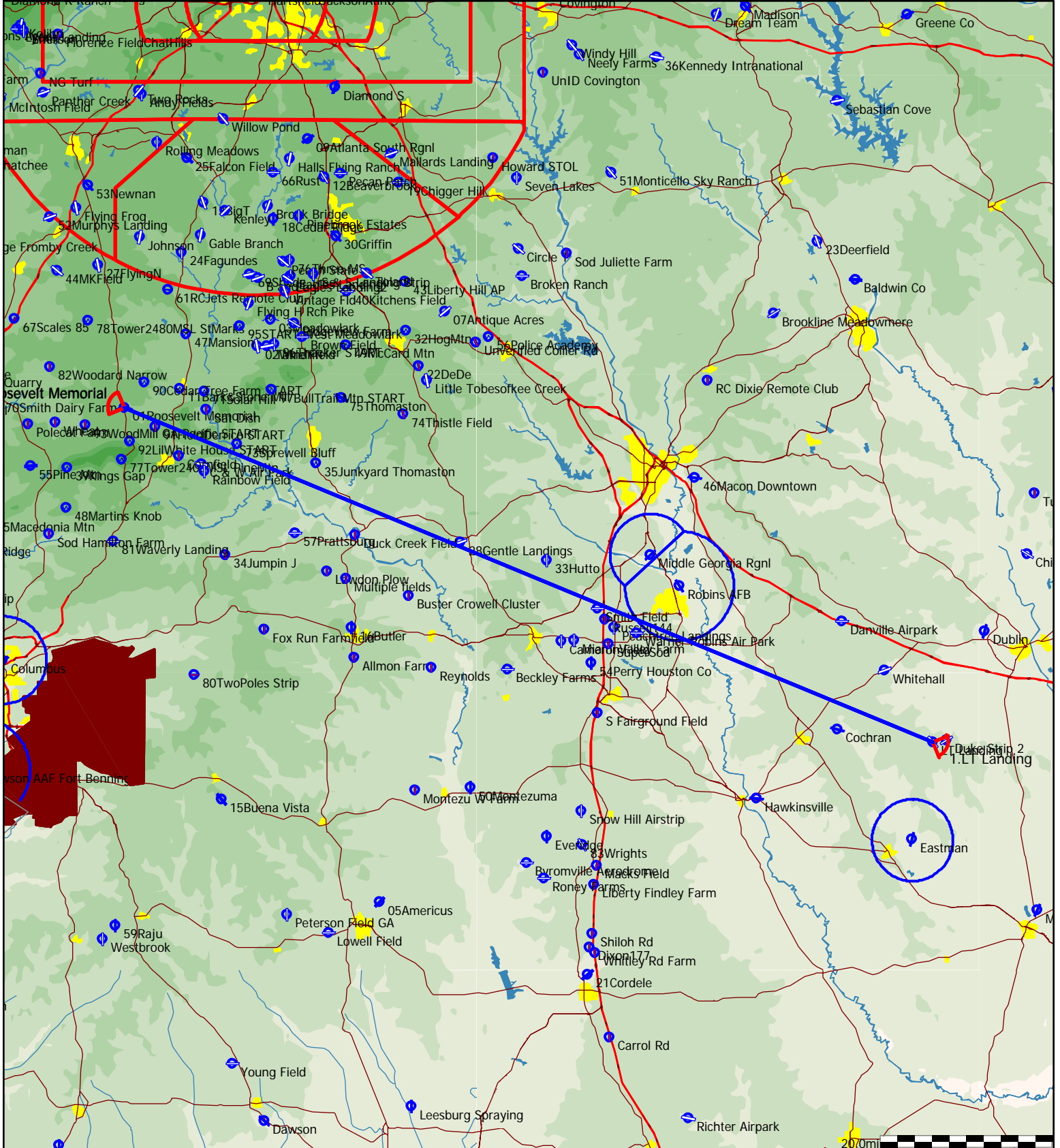
Style	Code	Points	Latitude	Longitude	Dis.	Crs.
Take off	01Rosevl	01Roosevelt Memorial	N32°56'19"	W084°41'47"		
Start	01Rosevl	01Roosevelt Memorial	N32°56'19"	W084°41'47"		
1.Point	Greene	Greene Co	N33°35'53"	W083°08'18"	101.0mi	63°
Finish	01Rosevl	01Roosevelt Memorial	N32°56'19"	W084°41'47"	101.0mi	244°
Landing	01Rosevl	01Roosevelt Memorial	N32°56'19"	W084°41'47"		



Type: Out and return [326.3pts]

Task distance: 202.7mi

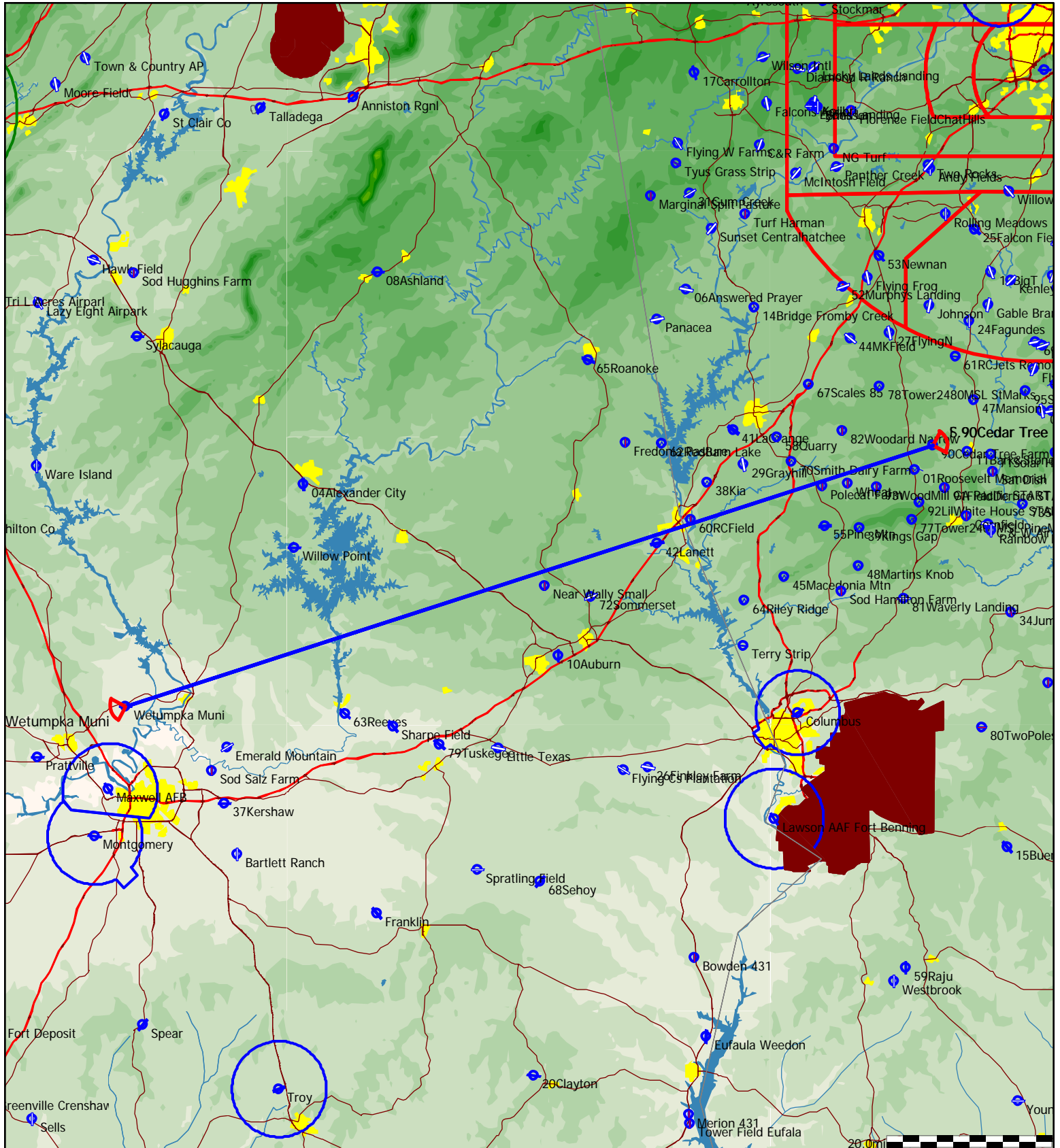
Style	Code	Points	Latitude	Longitude	Dis.	Crs.
Take off	01Rosevl	01Roosevelt Memorial	N32°56'19"	W084°41'47"		
Start	01Rosevl	01Roosevelt Memorial	N32°56'19"	W084°41'47"		
1.Point	LT Land	LT Landing	N32°22'44"	W083°05'17"	101.4mi	112°
Finish	01Rosevl	01Roosevelt Memorial	N32°56'19"	W084°41'47"	101.4mi	293°
Landing	01Rosevl	01Roosevelt Memorial	N32°56'19"	W084°41'47"		



Type: Out and return [329.4pts]

Task distance: 204.7mi

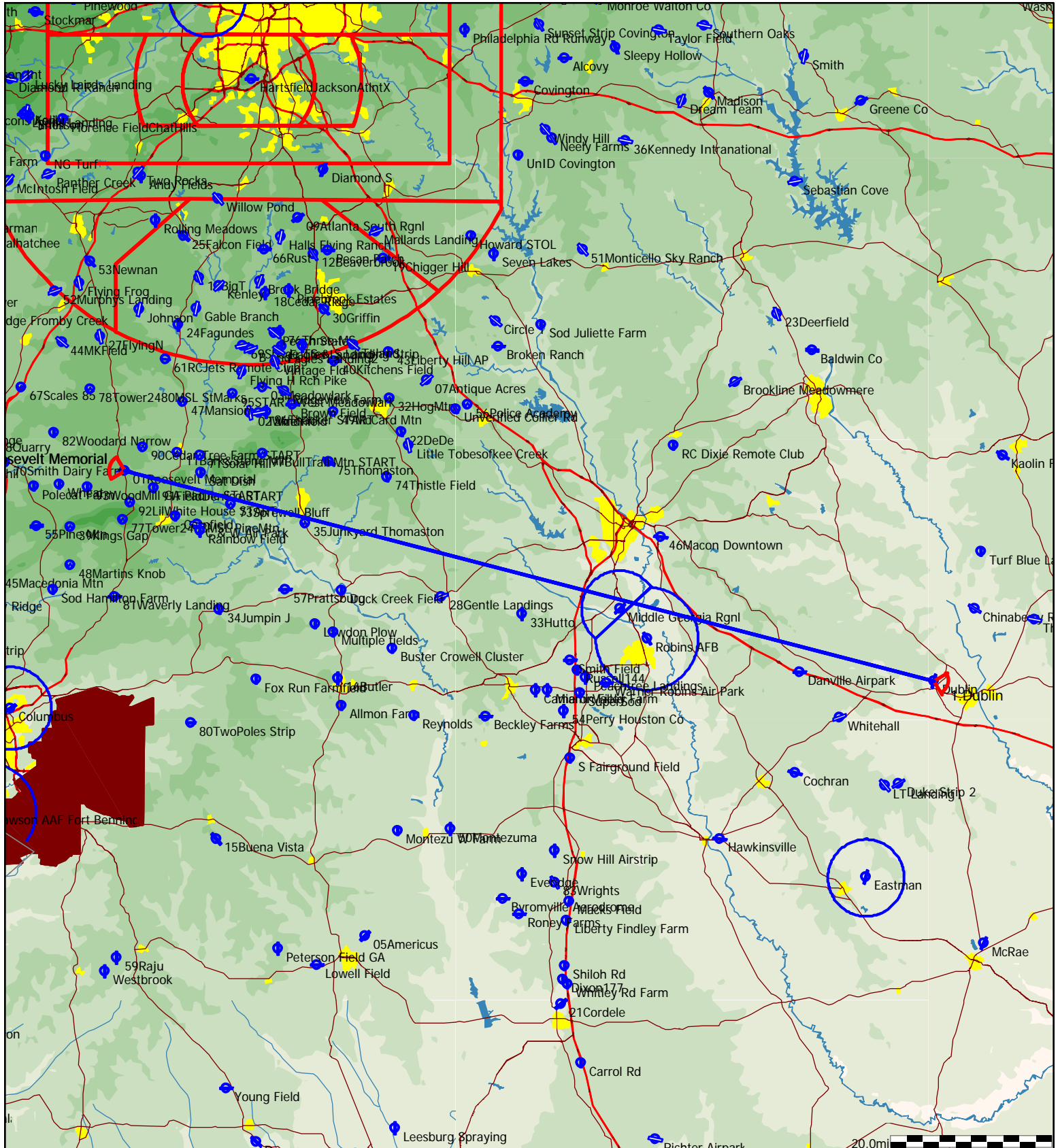
Style	Code	Points	Latitude	Longitude	Dis.	Crs.
Take off	01Rosevl	01Roosevelt Memorial	N32°56'19"	W084°41'47"		
Start	90CedrST	90Cedar Tree Farm START	N32°58'54"	W084°39'29"		
1.Point	Wetumpka	Wetumpka Muni	N32°31'38"	W086°19'52"	102.3mi	253°
Finish	90CedrST	90Cedar Tree Farm START	N32°58'54"	W084°39'29"	102.3mi	72°
Landing	01Rosevl	01Roosevelt Memorial	N32°56'19"	W084°41'47"		



Type: Out and return [331.3pts]

Task distance: 205.9mi

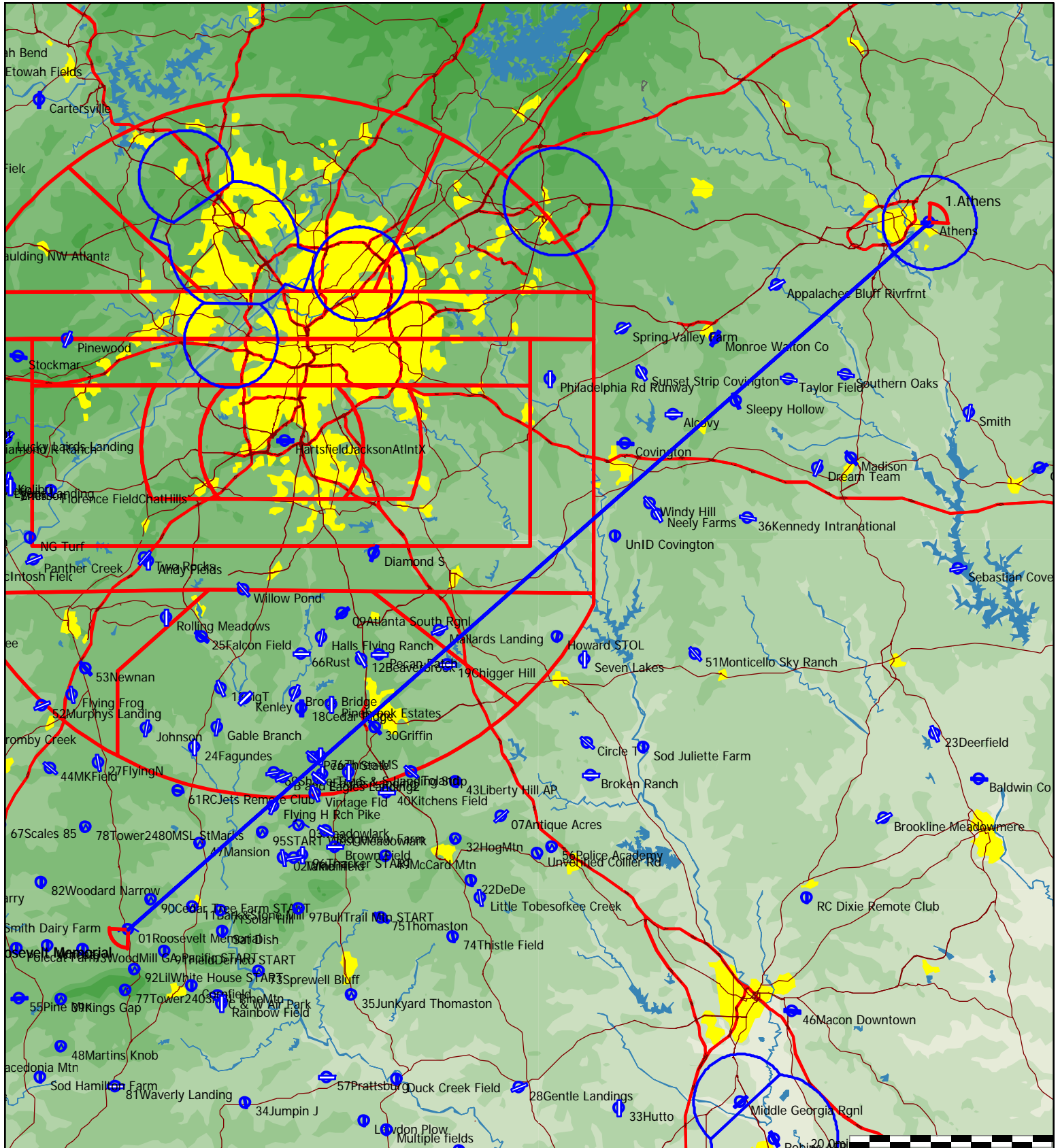
Style	Code	Points	Latitude	Longitude	Dis.	Crs.
Take off	01Rosevl	01Roosevelt Memorial	N32°56'19"	W084°41'47"		
Start	01Rosevl	01Roosevelt Memorial	N32°56'19"	W084°41'47"		
1.Point	Dublin	Dublin	N32°33'53"	W082°59'06"	102.9mi	104°
Finish	01Rosevl	01Roosevelt Memorial	N32°56'19"	W084°41'47"	102.9mi	285°
Landing	01Rosevl	01Roosevelt Memorial	N32°56'19"	W084°41'47"		



Type: Out and return [339.3pts]

Task distance: 210.8mi

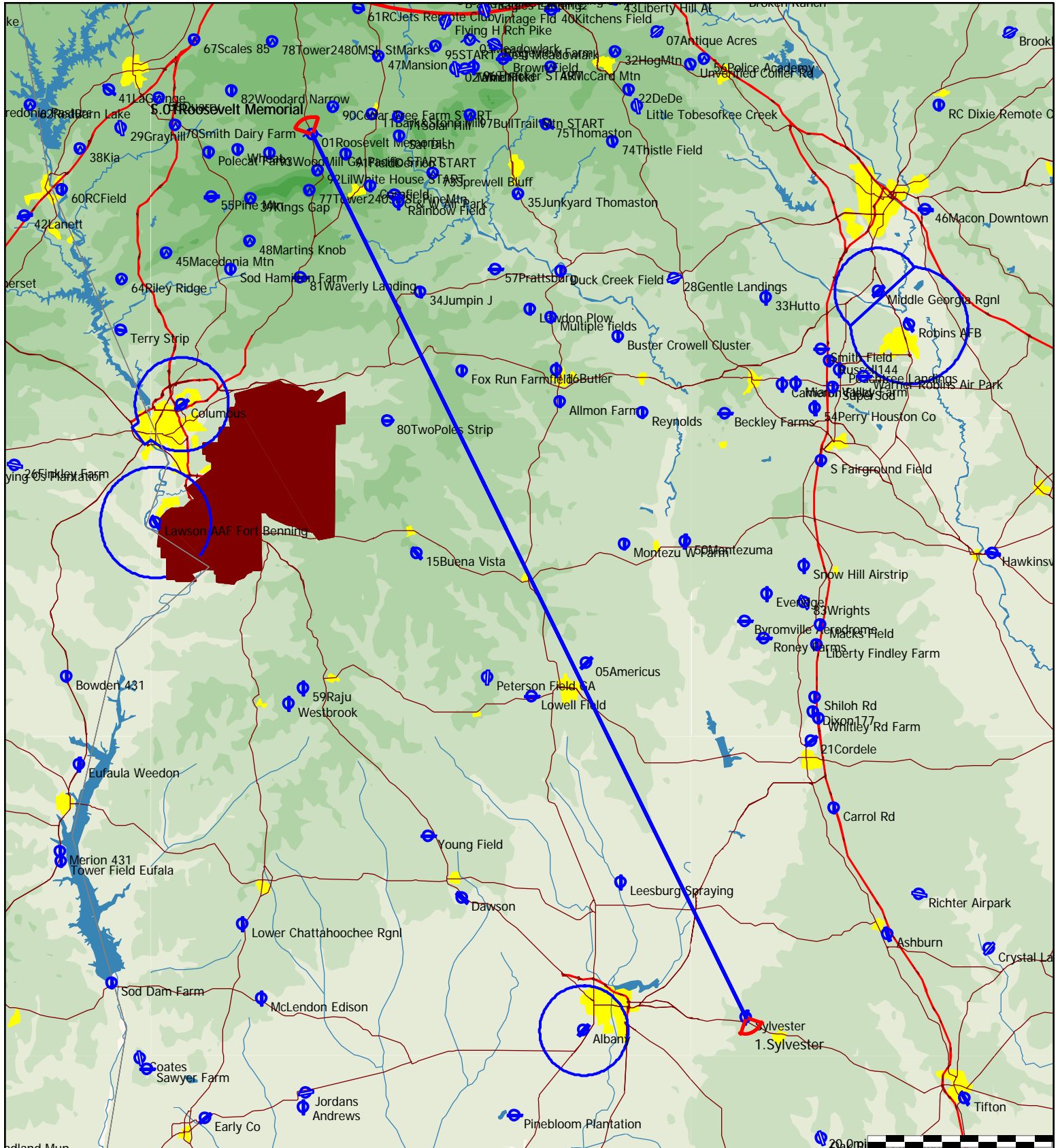
Style	Code	Points	Latitude	Longitude	Dis.	Crs.
Take off	01Rosevl	01Roosevelt Memorial	N32°56'19"	W084°41'47"		
Start	01Rosevl	01Roosevelt Memorial	N32°56'19"	W084°41'47"		
1.Point	Athens	Athens	N33°56'55"	W083°19'35"	105.4mi	48°
Finish	01Rosevl	01Roosevelt Memorial	N32°56'19"	W084°41'47"	105.4mi	229°
Landing	01Rosevl	01Roosevelt Memorial	N32°56'19"	W084°41'47"		



Type: Out and return [341.8pts]

Task distance: 212.4mi

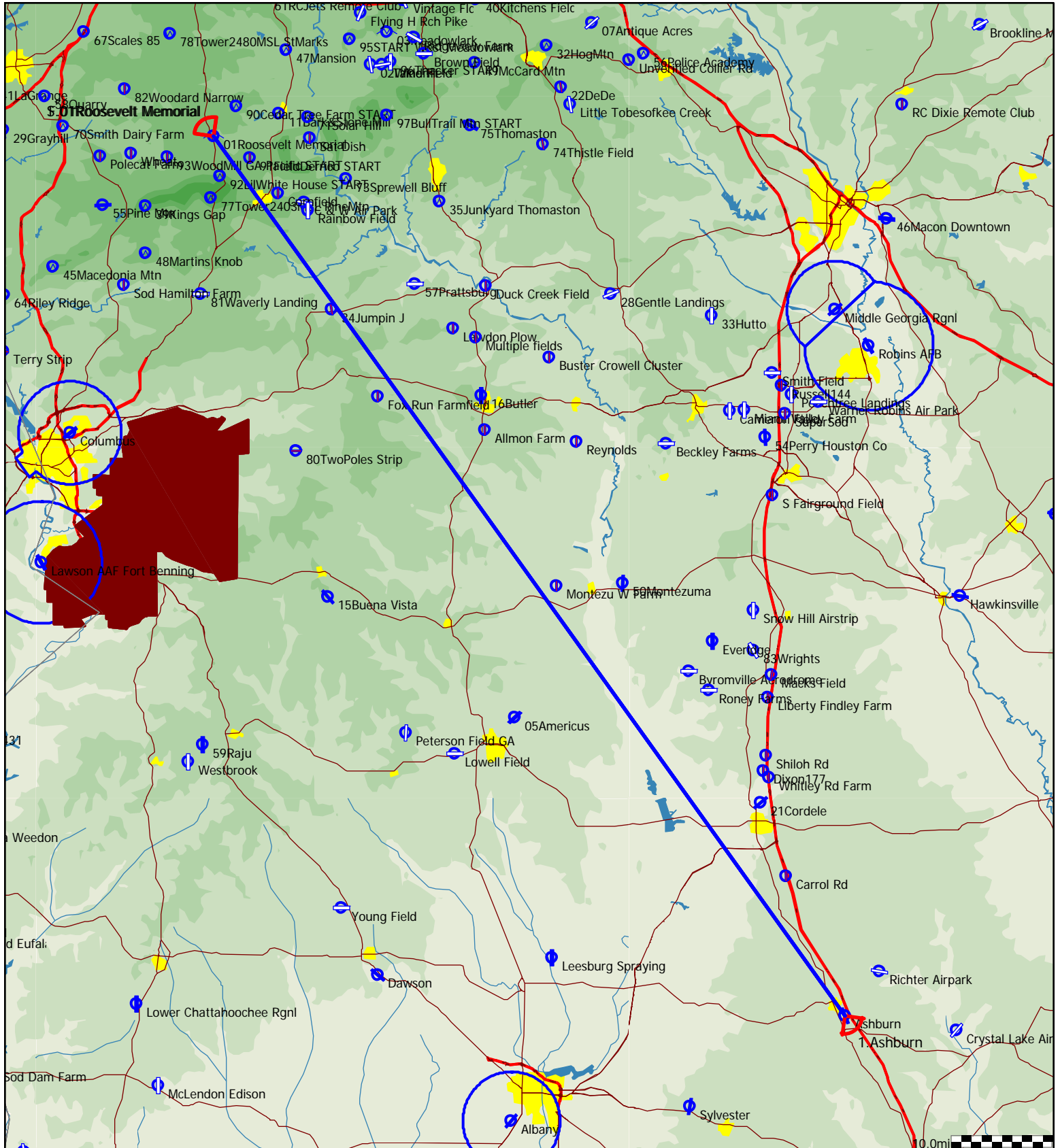
Style	Code	Points	Latitude	Longitude	Dis.	Crs.
Take off	01Rosevl	01Roosevelt Memorial	N32°56'19"	W084°41'47"		
Start	01Rosevl	01Roosevelt Memorial	N32°56'19"	W084°41'47"		
1.Point	Sylvestr	Sylvester	N31°33'23"	W083°53'39"	106.2mi	154°
Finish	01Rosevl	01Roosevelt Memorial	N32°56'19"	W084°41'47"	106.2mi	334°
Landing	01Rosevl	01Roosevelt Memorial	N32°56'19"	W084°41'47"		



Type: Out and return [342.6pts]

Task distance: 212.9mi

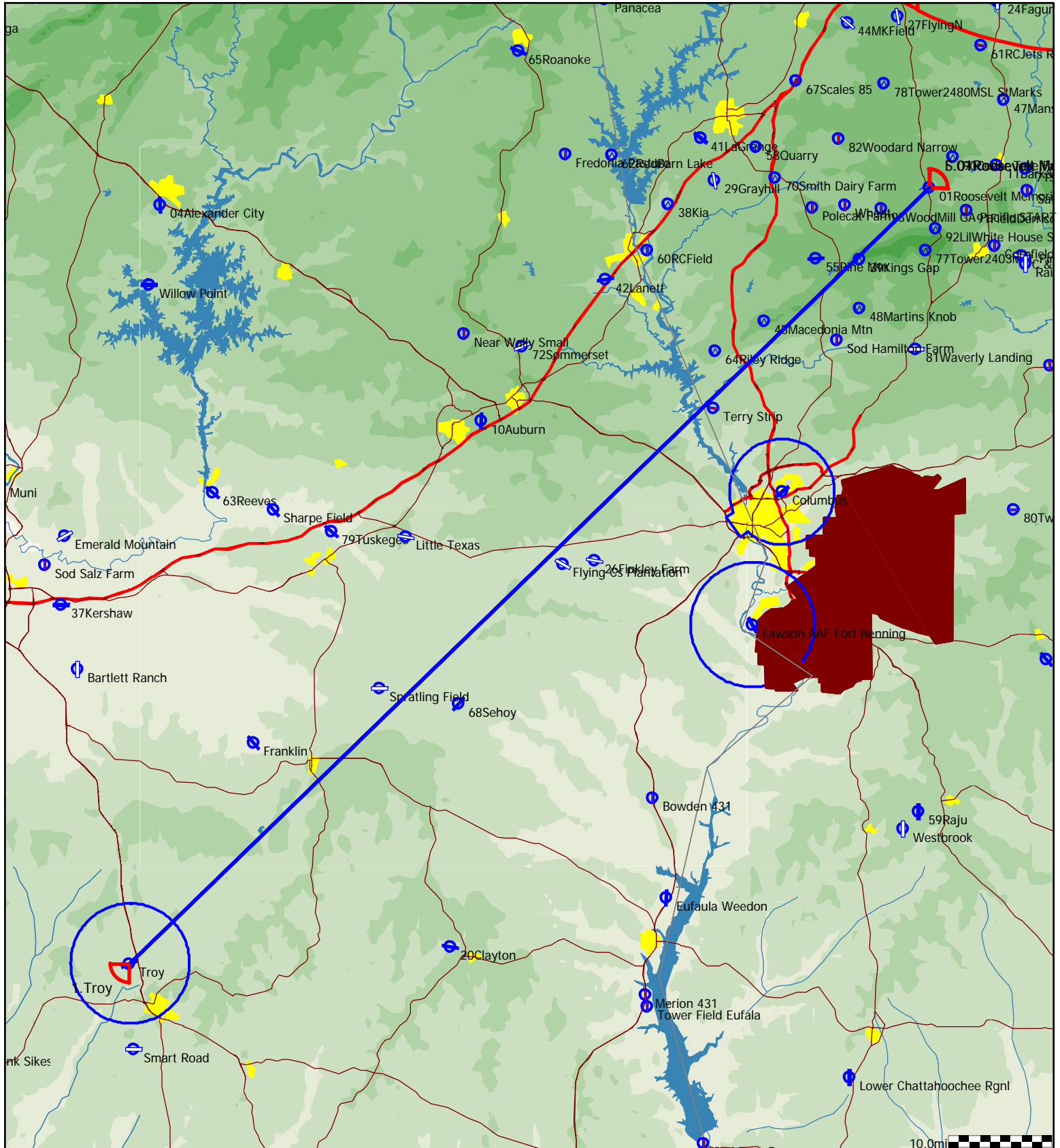
Style	Code	Points	Latitude	Longitude	Dis.	Crs.
Take off	01Rosevl	01Roosevelt Memorial	N32°56'19"	W084°41'47"		
Start	01Rosevl	01Roosevelt Memorial	N32°56'19"	W084°41'47"		
1.Point	Ashburn	Ashburn	N31°41'09"	W083°37'56"	106.4mi	144°
Finish	01Rosevl	01Roosevelt Memorial	N32°56'19"	W084°41'47"	106.4mi	324°
Landing	01Rosevl	01Roosevelt Memorial	N32°56'19"	W084°41'47"		



Type: Out and return [344.5pts]

Task distance: 214.1mi

Style	Code	Points	Latitude	Longitude	Dis.	Crs.
Take off	01Rosevl	01Roosevelt Memorial	N32°56'19"	W084°41'47"		
Start	01Rosevl	01Roosevelt Memorial	N32°56'19"	W084°41'47"		
1.Point	Troy	Troy	N31°51'36"	W086°00'50"	107.0mi	226°
Finish	01Rosevl	01Roosevelt Memorial	N32°56'19"	W084°41'47"	107.0mi	46°
Landing	01Rosevl	01Roosevelt Memorial	N32°56'19"	W084°41'47"		



Type: Out and return [347.6pts]

Task distance: 216.0mi

Style	Code	Points	Latitude	Longitude	Dis.	Crs.
Take off	01Rosevl	01Roosevelt Memorial	N32°56'19"	W084°41'47"		
Start	01Rosevl	01Roosevelt Memorial	N32°56'19"	W084°41'47"		
1.Point	Kaolin	Kaolin Field	N32°58'00"	W082°50'17"	108.0mi	88°
Finish	01Rosevl	01Roosevelt Memorial	N32°56'19"	W084°41'47"	108.0mi	269°
Landing	01Rosevl	01Roosevelt Memorial	N32°56'19"	W084°41'47"		

